



Ob-R (phospho Tyr1141) Polyclonal Antibody

Catalog No	YP-Ab-13083
Isotype	IgG
Reactivity	Human;Mouse
Applications	WB;ELISA
Gene Name	LEPR OBR
Protein Name	Leptin receptor
Immunogen	Synthesized phospho-peptide around the phosphorylation site of human Ob-R (phospho Tyr1141)
Specificity	Phospho-Ob-R (Y1141) Polyclonal Antibody detects endogenous levels of Ob-R protein only when phosphorylated at Y1141.
Formulation	Liquid in PBS containing 50% glycerol, 0.5% BSA and 0.02% sodium azide.
Source	Polyclonal, Rabbit,IgG
Purification	The antibody was affinity-purified from rabbit antiserum by affinity-chromatography using epitope-specific immunogen.
Dilution	Western Blot: 1/500 - 1/2000. ELISA: 1/5000. Not yet tested in other applications.
Concentration	1 mg/ml
Purity	≥90%
Storage Stability	-20°C/1 year
Synonyms	LEPR; DB; OBR; Leptin receptor; LEP-R; HuB219; OB receptor; OB-R; CD antigen CD295
Observed Band	132kD
Cell Pathway	Cell membrane ; Single-pass type I membrane protein . Basolateral cell membrane .; [Isoform E]: Secreted .
Tissue Specificity	Isoform A is expressed in fetal liver and in hematopoietic tissues and choroid plexus. In adults highest expression in heart, liver, small intestine, prostate and ovary. Low level in lung and kidney. Isoform B is highly expressed in hypothalamus, but also in skeletal muscle. Detected in fundic and antral epithelial cells of the gastric mucosa (PubMed:19159218). Isoform B and isoform A are expressed by NK cells (at protein level) (PubMed:12504075).
Function	domain:The box 1 motif is required for JAK interaction and/or activation.,domain:The cytoplasmic domain may be essential for intracellular signal transduction by activation of JAK tyrosine kinase and STATs.,domain:The WSXWS motif appears to be necessary for proper protein folding and thereby efficient intracellular transport and cell-surface receptor binding.,function:Receptor for obesity factor (leptin). On ligand binding, mediates signaling through JAK2/STAT3. Involved in the regulation of fat metabolism and, in a hematopoietic pathway, required for normal lymphopoiesis. May play a role in reproduction. Can also mediate the ERK/FOS signaling pathway.,PTM:On ligand binding, phosphorylated on two conserved C-terminal tyrosine residues (isoform



B only) by JAK2. Tyr-986 is required for complete binding and activation of PTPN11, ERK/FOS activation and, for interaction with SOCS3 (By similar

Background

The protein encoded by this gene belongs to the gp130 family of cytokine receptors that are known to stimulate gene transcription via activation of cytosolic STAT proteins. This protein is a receptor for leptin (an adipocyte-specific hormone that regulates body weight), and is involved in the regulation of fat metabolism, as well as in a novel hematopoietic pathway that is required for normal lymphopoiesis. Mutations in this gene have been associated with obesity and pituitary dysfunction. Alternatively spliced transcript variants encoding different isoforms have been described for this gene. It is noteworthy that this gene and LEPROT gene (GeneID:54741) share the same promoter and the first 2 exons, however, encode distinct proteins (PMID:9207021).[provided by RefSeq, Nov 2010],

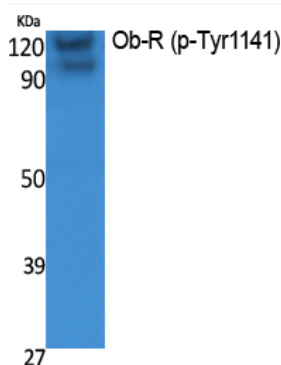
matters needing attention

Avoid repeated freezing and thawing!

Usage suggestions

This product can be used in immunological reaction related experiments. For more information, please consult technical personnel.

Products Images



Western Blot analysis of extracts from K562 cells, using Phospho-Ob-R (Y1141) Polyclonal Antibody.